

Minutes
May 31, 2018

Commissioners Present: Timothy Bechtol and Mark Gazarek

Also Present: Cindy Land, Adam Witteman, Sarah Mutchler, Steve Wilson, Jim Mauer, Maryann LaRoche and Don Van Rentergham.

Commissioner Bechtol opened the meeting at 9:30 a.m. in the 1st floor commissioner's conference room. The Pledge of Allegiance was recited. Minutes from the May 29, 2018 meeting were read with Timothy Bechtol making the motion to approve, Mark Gazarek seconded. Motion passed 2-0.

The Assistant Clerk presented the following resolutions for consideration:

Resolution #316-18: Additional appropriation within the Auditor's Certification-Commissioners to appropriate to Community Corrections Comp Plan. Timothy Bechtol made the motion to approve, Mark Gazarek seconded. Motion passed 2-0.

Resolution #317-18: Additional appropriation within the Auditor's Certification-Commissioners to appropriate to Probation Improvement. Timothy Bechtol made the motion to approve, Mark Gazarek seconded. Motion passed 2-0.

Resolution #318-18: Additional appropriation within the Auditor's Certification-Commissioners to appropriate to BMV. Timothy Bechtol made the motion to approve, Mark Gazarek seconded. Motion passed 2-0.

Lucinda Land had nothing to report.

Adam Witteman had nothing to report.

Steve Wilson reported there was an EPA Public Meeting held Tuesday, May 29, 2018 regarding the Landfill expansion. Final seeding will be done soon for the Landfill Waterline Project and the final permit should be issued within 2 weeks. The public comment period will end June 5, 2018. Steve also provided an update on Dalzell Ditch as crews returned for seeding and stump removal on May 30, 2018.

Don Van Rentergham submitted the final layout for the Spirit of 1776 program. Commissioners appreciated the revision and accepted the layout.

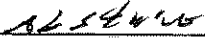
Meetings/Reports

Mark Gazarek met with several representatives, jail personnel and judges regarding the opioid epidemic.

Timothy Bechtol attended the Chamber Advisory Board Meeting. Timothy acknowledged that CR 139 will be closed until August 10, 2018 for bridge deck repair per the Engineer's Office.
Respectfully submitted,

Lynn Taylor, Assistant Clerk

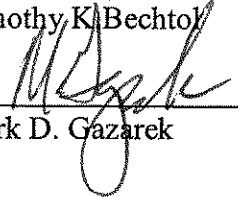
Reviewed and approved by:



Brian J. Robertson



Timothy K. Bechtol



Mark D. Gazarek



CITIZEN ADVISORY

Public Interest Center (614) 644-2160

FOR RELEASE: May 16, 2018

CONTACT: Heather Lauer, (614) 644-2160

Hancock County Landfill Expansion Permit Subject of Ohio EPA Meeting
Hearing Scheduled May 29 in Findlay

Ohio EPA will hold a public information session and hearing at 6 p.m. on Tuesday, May 29, 2018, regarding a proposed expansion of the Hancock County Landfill that, if approved, would increase the landfill's footprint by 56.5 acres. The meeting will be in the Findlay-Hancock Public Library's Lindamood Room, 206 Broadway St., Findlay.

Hancock County owns the municipal solid waste landfill at 3763 County Road 140, Findlay. The Hancock County Board of Commissioners is applying for the lateral expansion.

The landfill receives approximately 464 tons of waste per day. If approved, the landfill would add more than 6.8 million cubic yards of capacity, increasing the facility's lifespan to 43 years at current disposal rates. The landfill currently is authorized to take up to 750 tons of waste a day.

The expansion application includes a request for an exemption from a rule requiring at least a 200-foot setback from a stream, lake or wetland. If approved, the landfill would be less than 200 feet from three wetland areas. A fourth wetland would be removed by the expansion. The county has applied for an Ohio isolated wetland permit for authorization to eliminate the small, low-quality wetland.

During the information session, Ohio EPA staff will explain the permitting process and provide an overview of the permit application. The Agency will respond to questions about the proposed expansion.

During the public hearing, Ohio EPA will accept comments on the record about the draft permit. Ohio EPA values public input. Anyone may submit comments and/or request to be on a mailing list to receive notice regarding further action on the expansion application by writing to: Ohio EPA, Division of Materials and Waste Management, P.O. Box 1049, Columbus, Ohio 43216, attention Brian Dearth, or by email to epa.dmwcomments@epa.ohio.gov. The public comment period ends on June 5.

The draft permit is available for review [online](#).

**Hancock County Landfill
Draft Vertical Expansion
Permit to Install**

Information Session and Hearing

Habib Kaake
Permit Reviewer

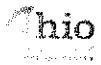
Division of Materials and Waste Management

May 29, 2018



Draft Expansion Permit

- Application received March 19, 2009
- Applicant's public meeting held April 21, 2009
- Draft permit issued April 24, 2018
- Owner/Operator: Hancock County Board of County Commissioners



Landfill Disposal Area and Lifetime

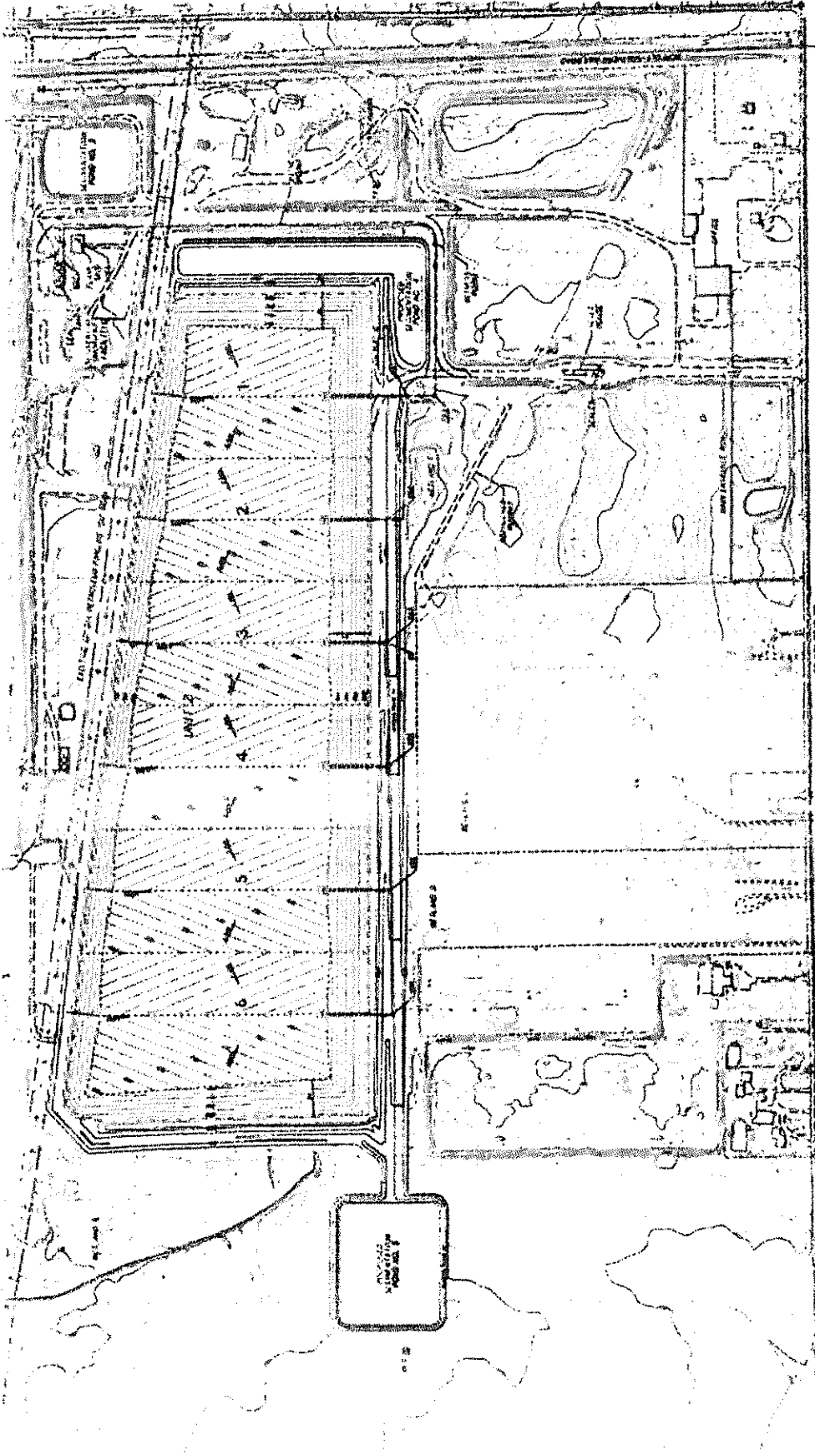
- 56.5-acre new disposal area
- 6.85 million cubic yards
- 511 tons per day (tpd), 2017 average
- Additional life gained by this permit
 - Currently has 1.2 years remaining
 - Would add 43 years, based on 2017 averages



Draft Permit Content

- Lateral expansion, no "piggy-backing" over the existing unit
- The lateral expansion height will be lower than the existing unit, [950 feet above mean sea level (msl) vs. 900 feet msl]



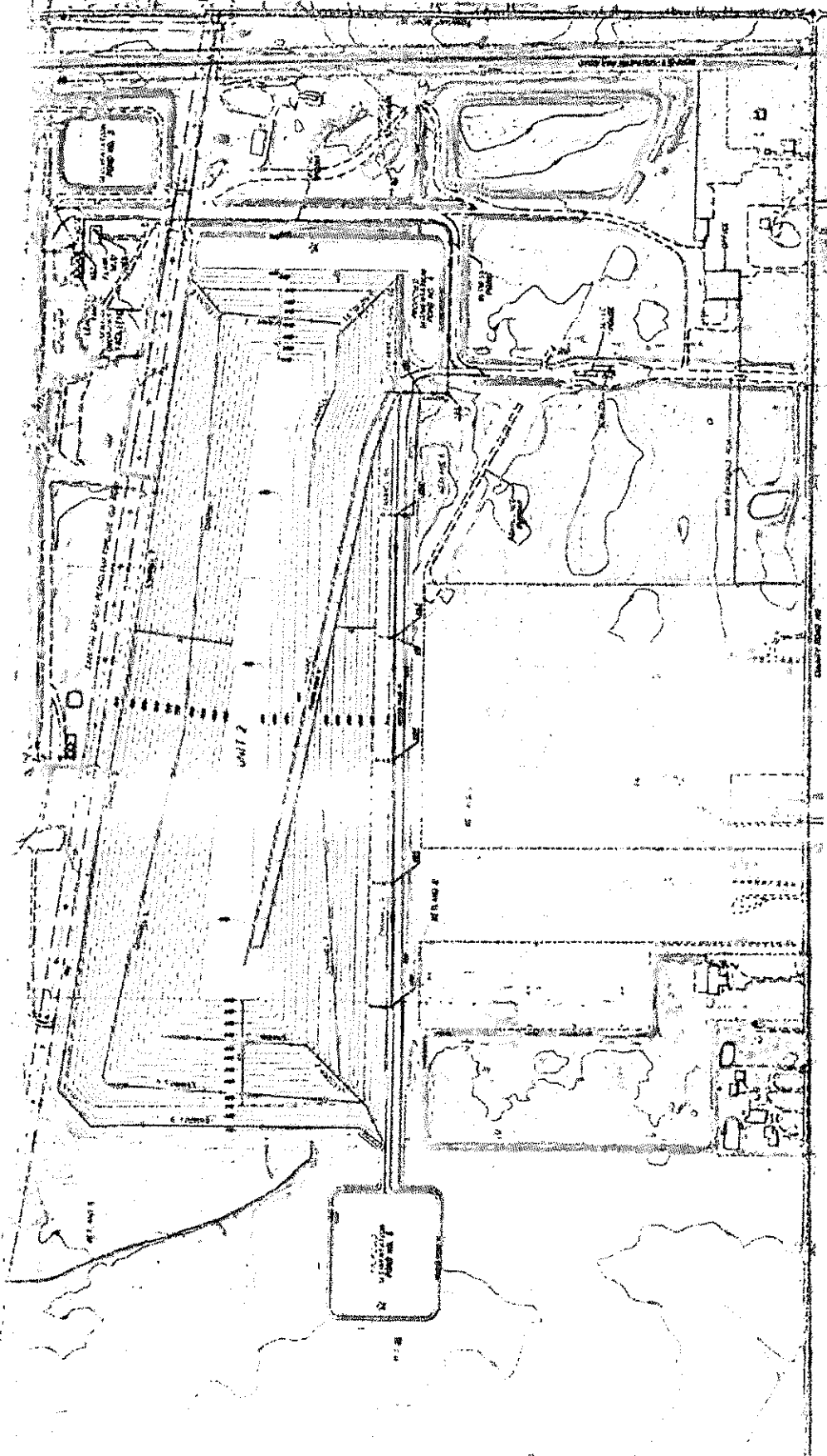


SLUMP/REFURBISHED LCS PIPE TABLE		
PHASE	SLUMP	ELEVATION
1	WICH	751.00
2	SLUMP	751.00
3	SLUMP	751.00
4	SLUMP	751.00
5	SLUMP	751.00
6	SLUMP	751.00

- NOTES**
1. ALL AREA ELEVATIONS PROVIDED BY CONSULTING SURVEY DATED 5/10/2005. SIMILAR MATERIALS SUPPLEMENTAL AREA, TOPOGRAPHY PROVIDED BY MAIN SURVEYING SERVICE, INC. DATED 05/20/04. CONTOUR INTERVAL: 2 FEET.
 2. LATERAL EXPANSION CONTOURS SHOWN ARE TOP OF LEACHATE STORAGE MATERIAL. APPROXIMATE PHASE LIMITS SHOWN ARE FOR REFERENCE ONLY.
 3. LEACHATE WATER FLOW METER LOCATION.

- PROPOSED LEACHATE COLLECTION (LCS) PIPELINE
- EXISTING GRAVITY LCS PIPELINE (LCS) PIPELINE
- EXISTING GRAVITY LCS PIPELINE (LCS) PIPELINE
- OR LINE
- SEWER ELEVATION/START LINE
- FORECLOSURE

- 1. PROPERTY BOUNDARY
- 2. WALKWAY LINE
- 3. LIMITS OF SOLID WASTE PLACEMENT UNIT 21
- 4. PHASE LIMIT AND DESIGNATION UNIT 21
- 5. WALKWAY
- 6. OR STRUCTURE
- 7. FORECLOSURE CONTOUR
- 8. RECOMPACTED SOLID BENE CONTOUR
- 9. TOP OF LEACHATE DRAINAGE MATERIAL CONTOUR
- 10. TOP OF SLOPE/BLOW
- 11. ACCESS ROAD
- 12. WASTE AND LEACHATE
- 13. WALKWAY



- NOTES**
1. ALL DATA ON THIS PLAN WAS OBTAINED FROM AERIAL PHOTOGRAPHS, SURVEY DATA, AND FIELD SURVEYS. THE DATA IS SUBJECT TO THE ACCURACY OF THE SURVEYING SERVICES, INC. DATED 08/18/2010. CONTOUR INTERVAL: 2 FEET.
 2. LATERAL EXPANSION CONTOURS SHOWN ARE TOP OF FINISH COVER.
 3. LEACHATE MASTER FLOOR LOCATION.

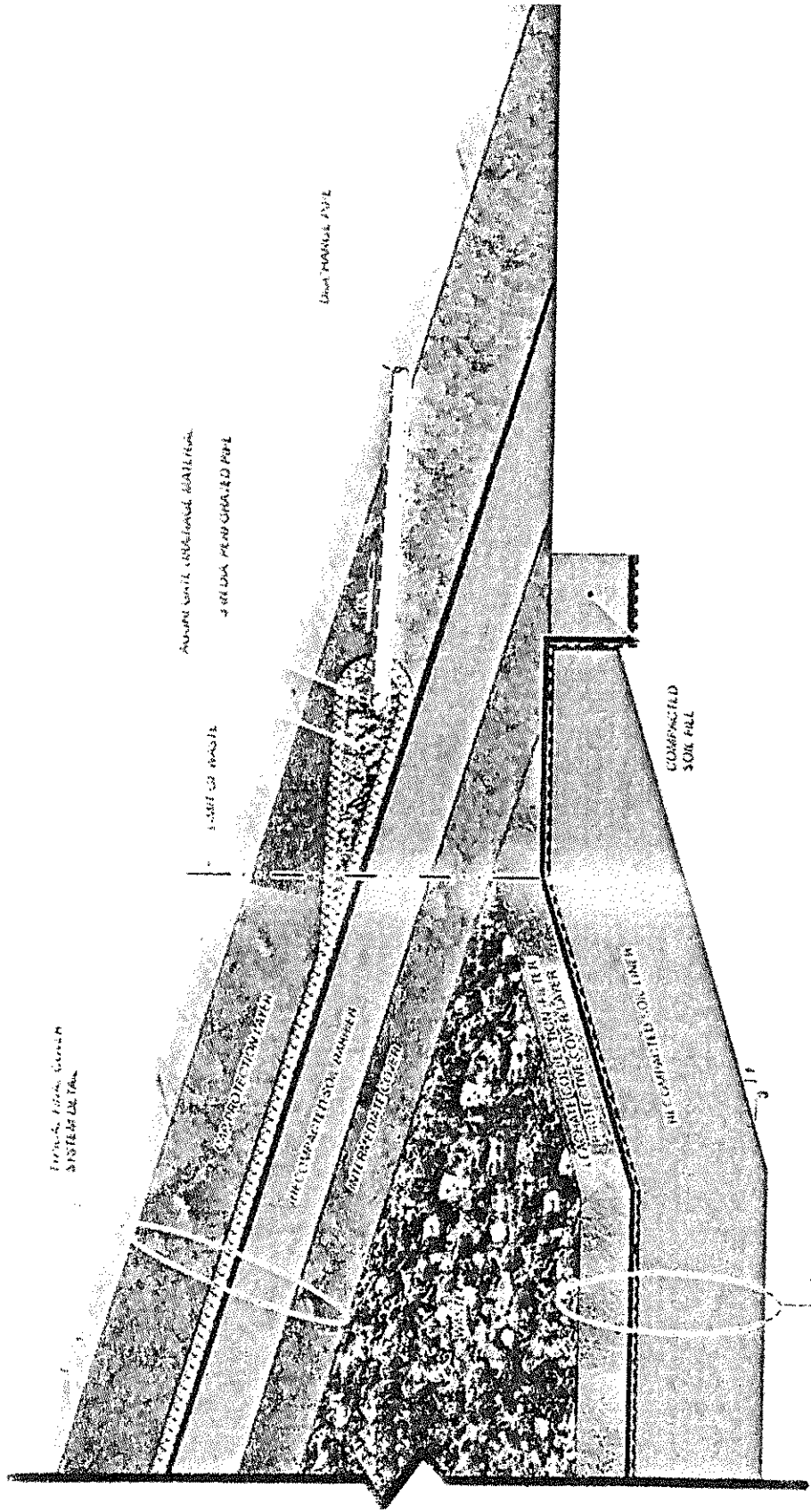
- EXISTING DRAINAGE (AS PER PLAN) (DOTTED LINE)
- ON LINE
- SEWER ELEVATION/UNIT LINE
- FORCE MAIN
- MANHOLE/VEHICLE VERIFICATION BASIN
- MANHOLE OFFFALL

- UNIT 2 AND UNIT 3 SUBMITTAL
- RE DEVELOPMENT LINE
- UNIT 2 UNITS OF SOLID WASTE PLACEMENT UNIT 2
- UNIT 3 UNITS OF SOLID WASTE PLACEMENT UNIT 3
- UNIT 4 UNITS OF SOLID WASTE PLACEMENT UNIT 4
- SEWERAGE
- WATER SUPPLY LINE
- ELECTRICITY
- UNIT TOP OF FINISH COVER ELEVATIONS
- SCALE ACCESS ROAD
- SCALE AS SHOWN AREAS
- SCALE FOR MASTER FLOORING CHANNELS AT USERS
- SCALE FOR MASTER FLOOR
- SCALE FOR UNIT 2 AND UNIT 3 SUBMITTAL
- SCALE FOR UNIT 4 SUBMITTAL

Design Components

- Liner
 - Recompacted clay liner
 - Plastic liner (geomembrane)
 - Leachate collection system
- Cap
 - Recompacted clay barrier
 - Plastic liner
 - Drainage layer
 - Passive gas extraction design
 - Erosion and sediment control structures

Typical Landfill Cross Section



TYPICAL LINER/FINAL COVER SYSTEM TIE-IN
N.T.S.

Liner System

- 3-foot-thick compacted clay layer
- 60 mil plastic flexible membrane liner
- Leachate collection layer -- 12 inches granular material
- Select waste layer (5-foot layer; does not contain items that may puncture liner or clog leachate collection layer)



Cap System

- 1.5 feet-thick compacted clay barrier layer
- 40-mil plastic flexible membrane liner
- Drainage layer (double sided geocomposite)
- 2.5 feet-thick vegetative/freeze-thaw protection layer



Erosion and Sediment Controls

- Ditches collect and direct storm water to sedimentation ponds
- Two new sedimentation ponds on the north and south sides of the landfill
- Existing sedimentation ponds settle out silts



Other Components

- Ground water monitoring network
- Explosive gas monitoring network



Exemption Request

- Exemption request for siting the limits of solid waste placement of the sanitary landfill facility within 200 feet of surface waters
- The landfill would be sited within 200 feet of wetlands south of the limits of waste
- Engineering/Operational control measures in place



Next Steps

- Accept public comments through close of business June 5, 2018
- Response to Comments
- Staff recommendation
- Director makes final decision



Agency Contact

Habib A. Kaake	Heather Lauer
Environmental Specialist 3	Public Involvement
Division of Materials and	Coordinator
Waste Management	Public Interest Center
419-373-3073	614-644-2160
Habib.kaake@epa.ohio.gov	Heather.lauer@epa.ohio.gov



Comments

Send written comments by June 5, 2018, to:
Ohio EPA
Attn: Brian Dearth
Division of Materials and Waste Management
Processing and Records Management Unit
P.O. Box 1049
Columbus OH 43216-1049
EPA_DMWMComments@epa.state.oh.us



QUESTIONS?